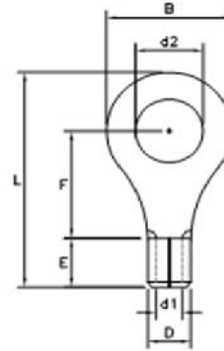


Non-Insulated Ring Terminals



Drawn - SD

Approved - KM

Material - Copper

Title - Non-Insulated Ring Terminals



Part Number	Wire Range	Electrical Rating Max	d2	B	F	L	E	D	d1
R22-6	22-18 AWG	105C / 600 Volts	0.1400	0.3120	0.2950	0.7020	0.2560	0.1270	0.0620
R22-8	22-18 AWG	105C / 600 Volts	0.1692	0.3149	0.2755	0.6299	0.1968	0.1338	0.0669
R22-10	22-18 AWG	105C / 600 Volts	0.2086	0.3149	0.2755	0.6299	0.1968	0.1338	0.0669
R22-14	22-18 AWG	105C / 600 Volts	0.2550	0.4660	0.4260	0.8940	0.2550	0.1290	0.0710
R22-56	22-18 AWG	105C / 600 Volts	0.3230	0.4690	0.4350	0.8930	0.2580	0.1290	0.0710
R22-38	22-18 AWG	105C / 600 Volts	0.3800	0.5350	0.5910	1.0970	0.2560	0.1290	0.0710
R16-6	16-14 AWG	105C / 600 Volts	0.1380	0.3130	0.3200	0.7040	0.2570	0.1540	0.0760
R16-8	16-14 AWG	105C / 600 Volts	0.1692	0.3346	0.3070	0.6692	0.1968	0.1614	0.0905
R16-10	16-14 AWG	105C / 600 Volts	0.2086	0.3346	0.3070	0.6692	0.1968	0.1614	0.0905
R16-14	16-14 AWG	105C / 600 Volts	0.2559	0.4724	0.4330	0.8661	0.1968	0.1614	0.0905
R16-56	16-14 AWG	105C / 600 Volts	0.3140	0.4724	0.4200	0.8920	0.2570	0.1560	0.0830
R16-38	16-14 AWG	105C / 600 Volts	0.4133	0.5354	0.5472	1.0118	0.1968	0.1614	0.0905
R16-50	16-14 AWG	105C / 600 Volts	0.5010	0.7480	0.5940	1.1230	0.1880	0.1650	0.0830
R12-6	12-10 AWG	105C / 600 Volts	0.1360	0.3740	0.3310	0.7660	0.2580	0.2200	0.1250
R12-8	12-10 AWG	105C / 600 Volts	0.1640	0.3760	0.3540	0.7630	0.2550	0.2180	0.1300
R12-10	12-10 AWG	105C / 600 Volts	0.1990	0.3720	0.3500	0.7400	0.2330	0.2200	0.1300
R12-14	12-10 AWG	105C / 600 Volts	0.2559	0.4724	0.4133	0.8858	0.2362	0.2204	0.1338
R12-56	12-10 AWG	105C / 600 Volts	0.3307	0.5905	0.5393	1.0708	0.2362	0.2204	0.1338
R12-38	12-10 AWG	105C / 600 Volts	0.4133	0.5905	0.5393	1.0708	0.2362	0.2204	0.1338
R12-50	12-10 AWG	105C / 600 Volts	0.5160	0.7550	0.6790	1.2840	0.2590	0.2190	0.1380
R8-10	8 AWG	105C / 600 Volts	0.1930	0.4700	0.4070	0.9550	0.3330	0.2790	0.1810
R8-14	8 AWG	105C / 600 Volts	0.2670	0.4570	0.4070	0.9560	0.3390	0.2820	0.1810
R8-56	8 AWG	105C / 600 Volts	0.3240	0.4710	0.4200	0.9520	0.3350	0.2840	0.1810
R8-38	8 AWG	105C / 600 Volts	0.3840	0.5900	0.4750	1.0830	0.3310	0.2800	0.1810
R6-14	6 AWG	105C / 600 Volts	0.2550	0.6340	0.5550	1.2530	0.3910	0.3570	0.2520
R6-56	6 AWG	105C / 600 Volts	0.3240	0.6350	0.5550	1.2430	0.3850	0.3580	0.2490
R6-38	6 AWG	105C / 600 Volts	0.3870	0.6350	0.5550	1.2390	0.3850	0.3580	0.2490
R6-50	6 AWG	105C / 600 Volts	0.5090	0.8270	0.6750	1.4340	0.3850	0.3580	0.2490
R4-14	4 AWG	105C / 600 Volts	0.2590	0.4690	0.5740	1.2450	0.4520	0.4450	0.3000
R4-56	4 AWG	105C / 600 Volts	0.3250	0.4760	0.5670	1.2500	0.4560	0.4470	0.3000
R4-38	4 AWG	105C / 600 Volts	0.3880	0.6650	0.5670	1.3400	0.4480	0.4420	0.3000
R4-50	4 AWG	105C / 600 Volts	0.5070	0.6650	0.5670	1.3270	0.4540	0.4420	0.3000
R2-14	2 AWG	105C / 600 Volts	0.2650	0.6360	0.7550	1.5630	0.5270	0.5270	0.3720
R2-56	2 AWG	105C / 600 Volts	0.3250	0.8680	0.7570	1.6730	0.5260	0.5230	0.3680
R2-38	2 AWG	105C / 600 Volts	0.3870	0.6350	0.7850	1.5630	0.5260	0.5240	0.3710
R2-50	2 AWG	105C / 600 Volts	0.5070	0.8680	0.7360	1.6770	0.5230	0.5250	0.3750